

Topaz Signature Pad Installation Instructions

Table of Contents

Getting Started	1
Installation – On Client PC.....	2
Installation - Using Terminal Server or Citrix	10

Getting Started

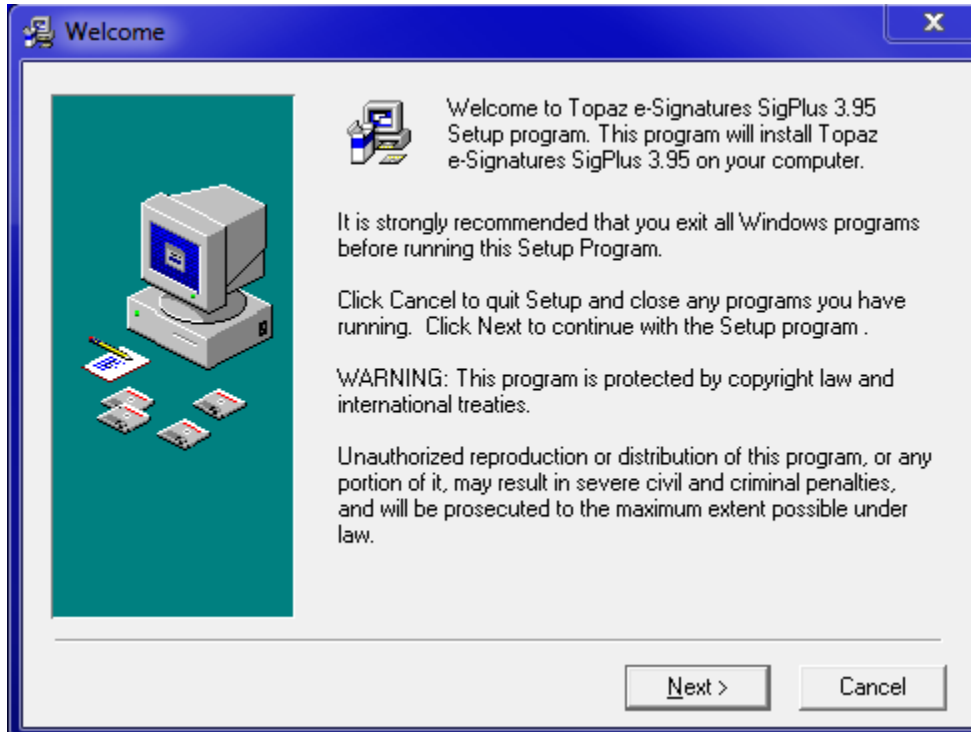
The SigPlus electronic signature software allows for versatile signature-capture operation with Windows operating systems 95 and greater. These instructions were written and tested with sigplus.exe version 3.95 and sigsockinstall.exe version 3.97.

DO NOT connect the device until the software is installed. To connect the device, simply insert the USB plug into the USB port specified during the installation. The device is hot-pluggable and may be connected and removed without restarting the host computer. When connected properly, the LCD screen will briefly display a “waterfall” of pixels to verify that it is operable.

USB connectivity is the only supported connection type and SigLite LCD 1X5 (T-L460) is the only supported tablet device model recognized by ADL Optimum Series software.

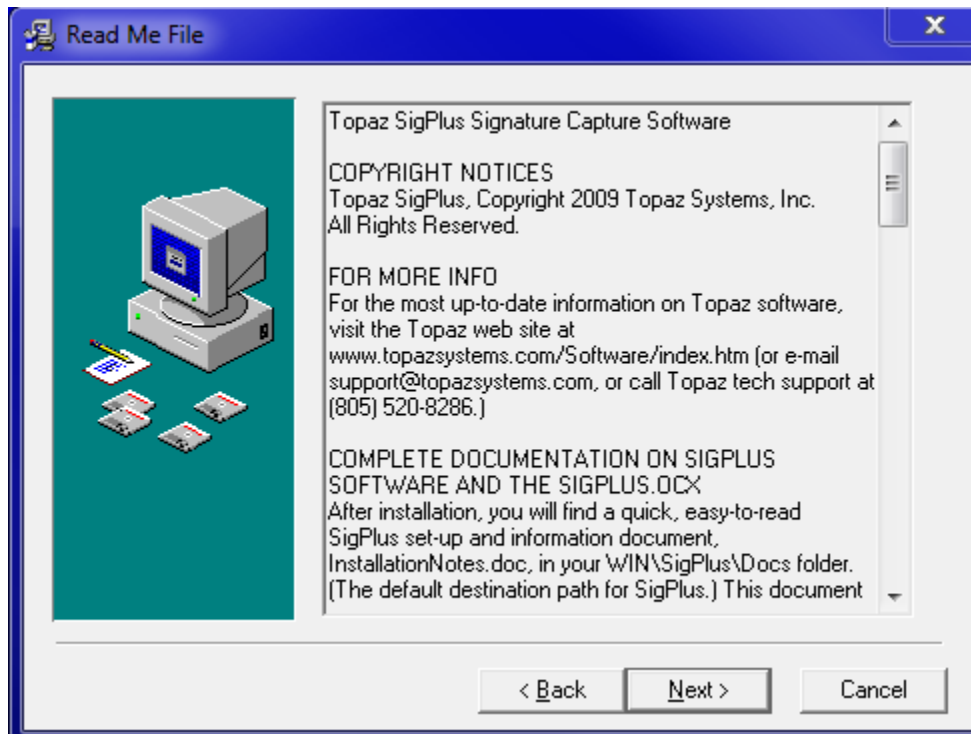
Installation – On Client PC

1. Open the folder in which **sigplus.exe** is located. Usually this is D:\adl3\ in an MS SQL environment or D:\adl2\ in an Oracle environment, where D is the root drive where ADL applications are installed.
2. Start the installation program by double clicking sigplus.exe. The **Welcome** screen is displayed.

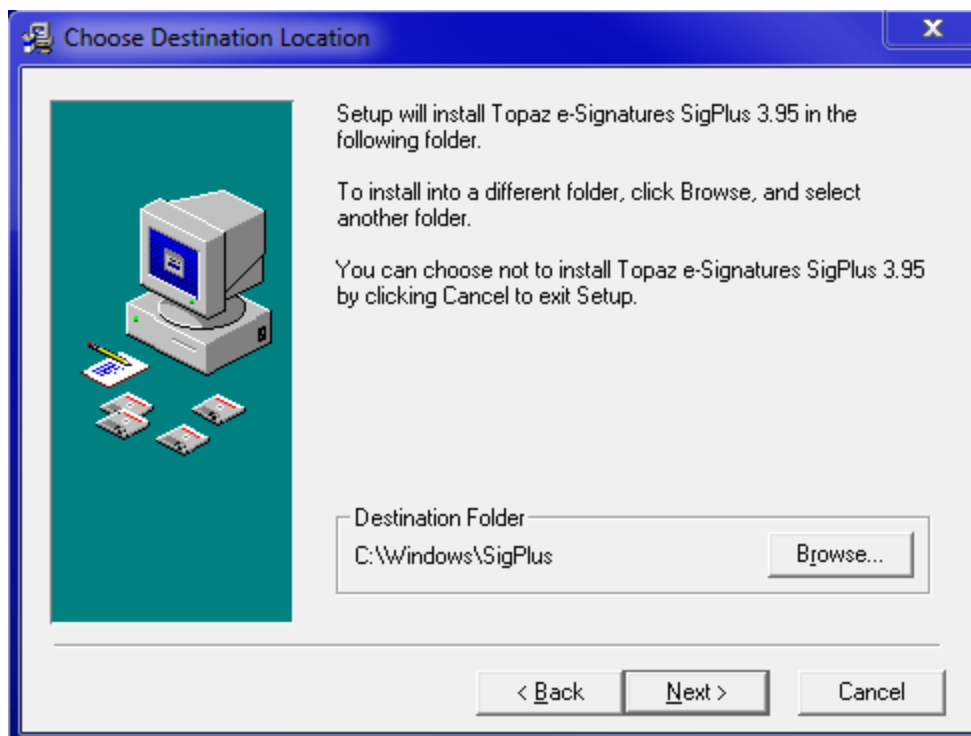


3. Close any open Windows programs and click the **Next** button.

4. Read the information displayed in the **Read Me File** window. Click the **Next** button when finished.



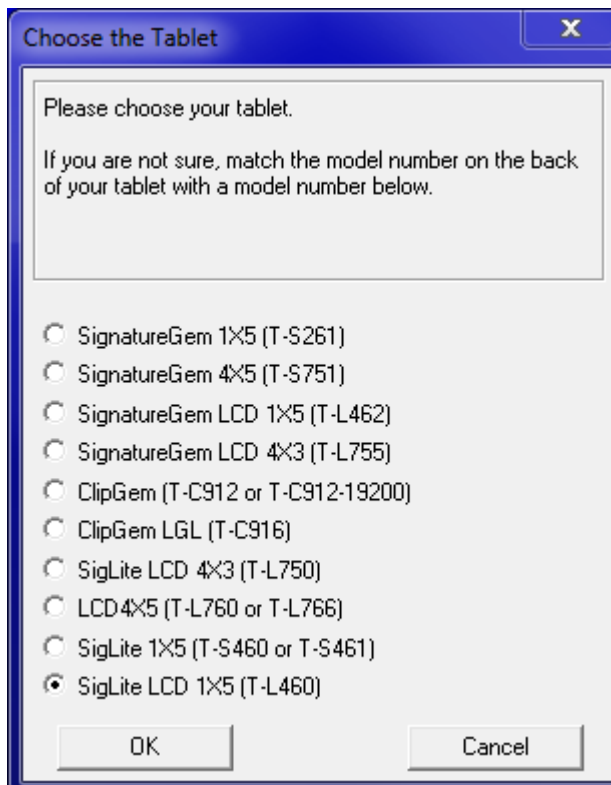
5. Use the **Browse** button in the **Choose Destination Location** window to specify a folder where the Topaz software will be installed. Click the **Next** button when finished.



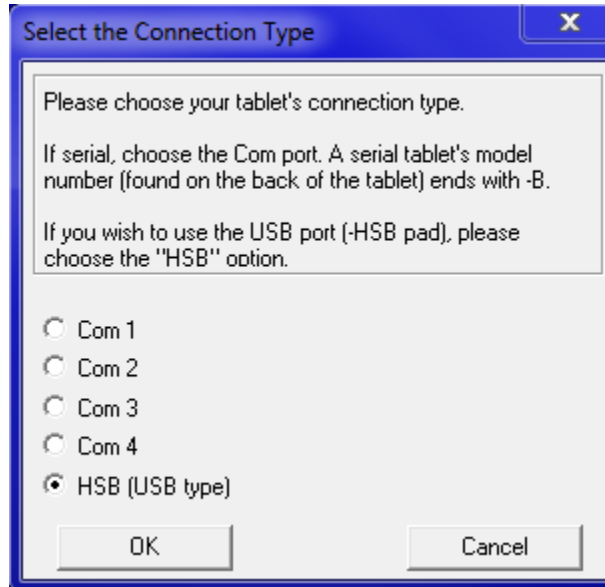
- In the **SigPlus Install** window, select the radio button applicable to the operating system you are using. Click the **OK** button when finished.



- In the **Choose the Tablet** window, select the **SigLite LCD 1X5 (T-L460)** radio button. SigLite LCD 1X5 (T-L460) is the only supported tablet device model recognized by ADL Optimum Series software. Click the **OK** button when finished.



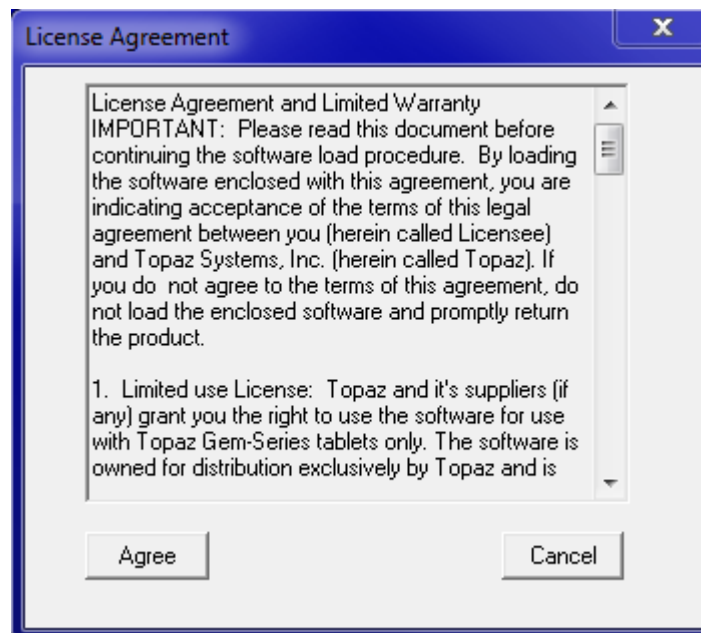
- In the **Set the Connection Type** window, select the **HSB (USB type)** radio button. USB connectivity is the only supported connection type recognized by ADL Optimum Series software. Click the **OK** button when finished.



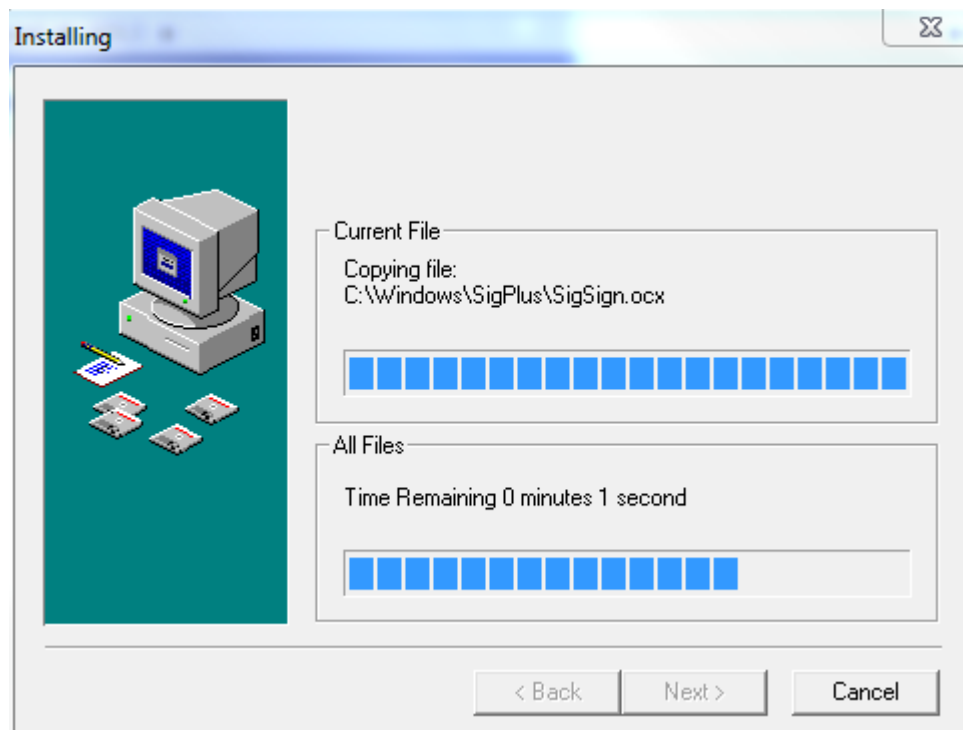
- The **HSB Tablet Message** displays and serves as a reminder that you must unplug the tablet device. Unplug the device if it is plugged in and click **OK**.



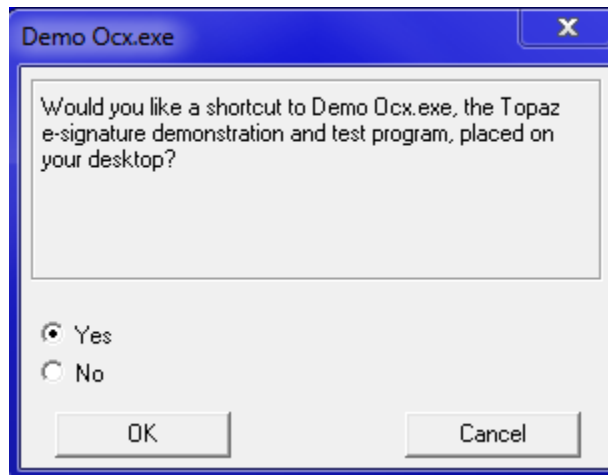
10. Read the **License Agreement**. You must agree to the terms in order to install the software. Click **Agree** after reading the agreement.



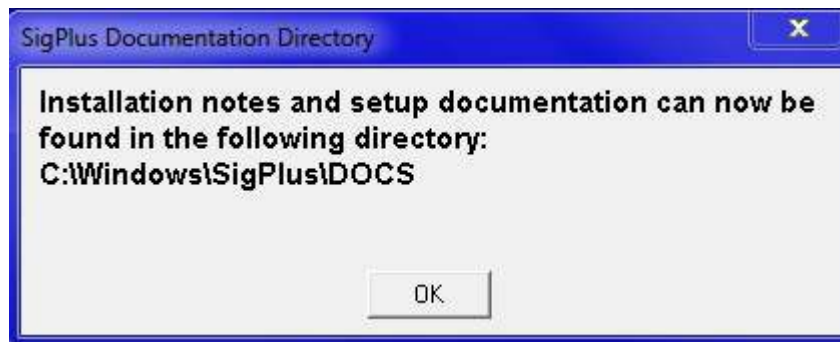
11. The progress of the installation is displayed in the **Installing** window. The window closes automatically after all files have been copied.



12. As an option, you can choose to have the installation place a shortcut on the desktop to the DemoOcx.exe. Click the radio button of your choice and then click **OK**.



13. A confirmation message indicating the directory where the installation notes and setup documentation can be found is displayed. Click **OK**.



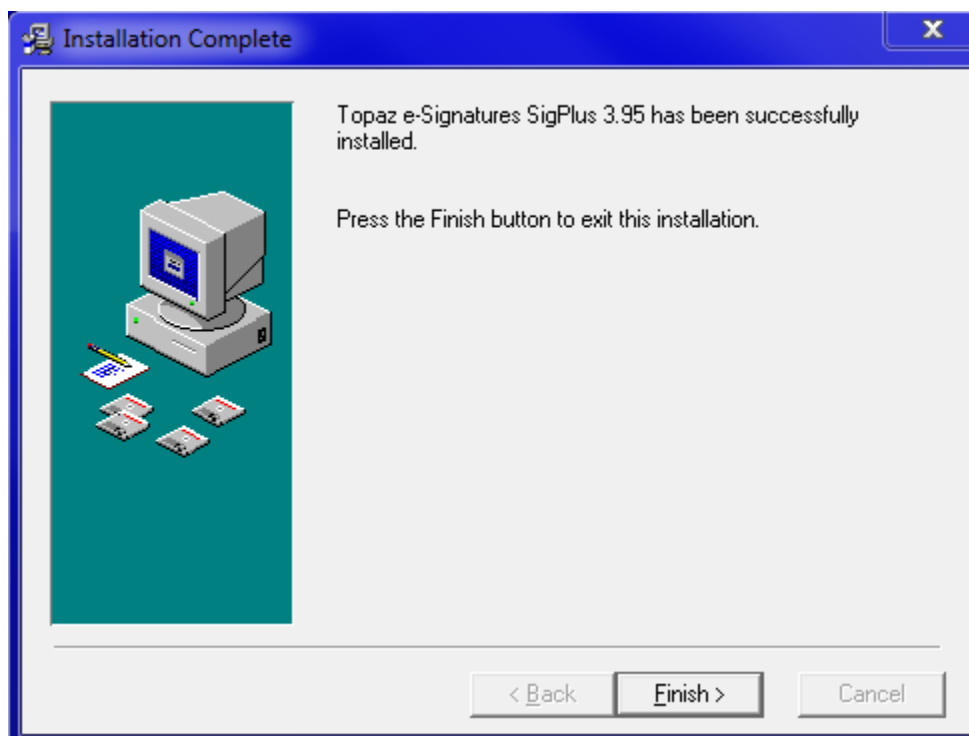
14. Topaz advertisement information displays. Click **OK**.



15. The **HSB Support** dialog displays and serves as a reminder that when the installation finishes and you plug in your device, the drivers will automatically load. Click **OK**.



16. Confirmation that the Topaz e-Signature SigPlus software was successfully installed is displayed in the **Installation Complete** window. Click the **Finish** button to exit the installation.



Installation - Using Terminal Server or Citrix

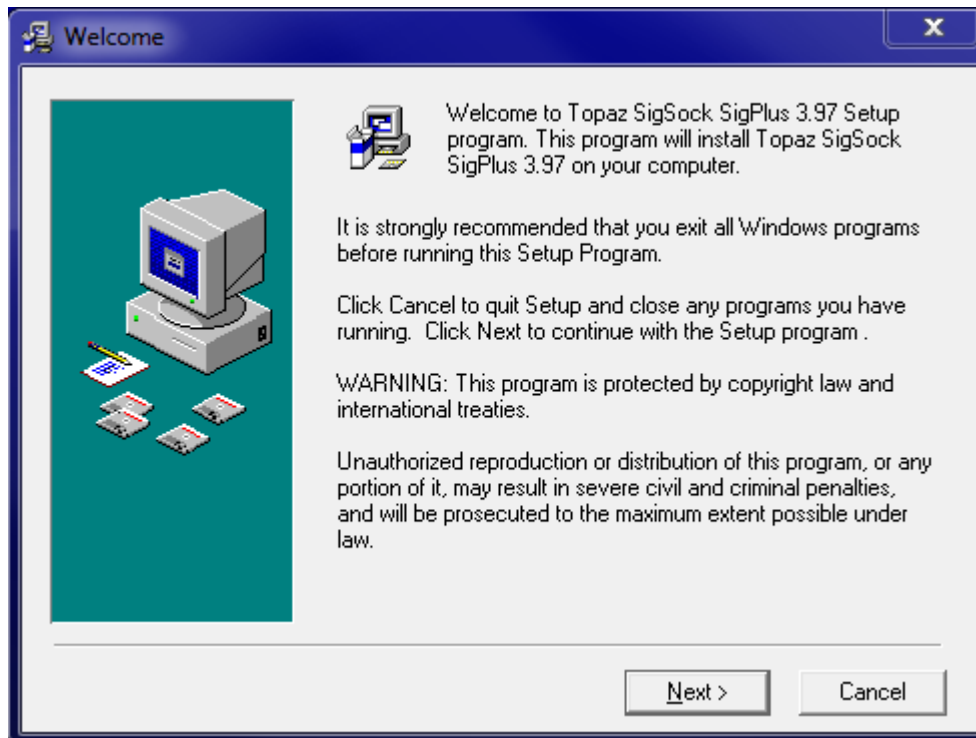
The SigSock system allows a Topaz HID USB (“HSB”) signature pad to be used in a thin client environment (Terminal Server 2003 RDP session or Citrix session) by utilizing a socket to pass the data from the client machine to the waiting SigPlus-based application on the server. This SigSock version requires that the client machine is a Windows fat client (running a full version of Windows such as 2000, XP, or equivalent). Thin client terminals (such as Wyse terminals) running XPe or “thin” operating systems are not covered in the document and version of SigSock. In order for the SigSock system to function, you must be using the SigPlus.ocx version 3.89 or greater.

In general terms, the following steps will need to take place to ensure successful implementation.

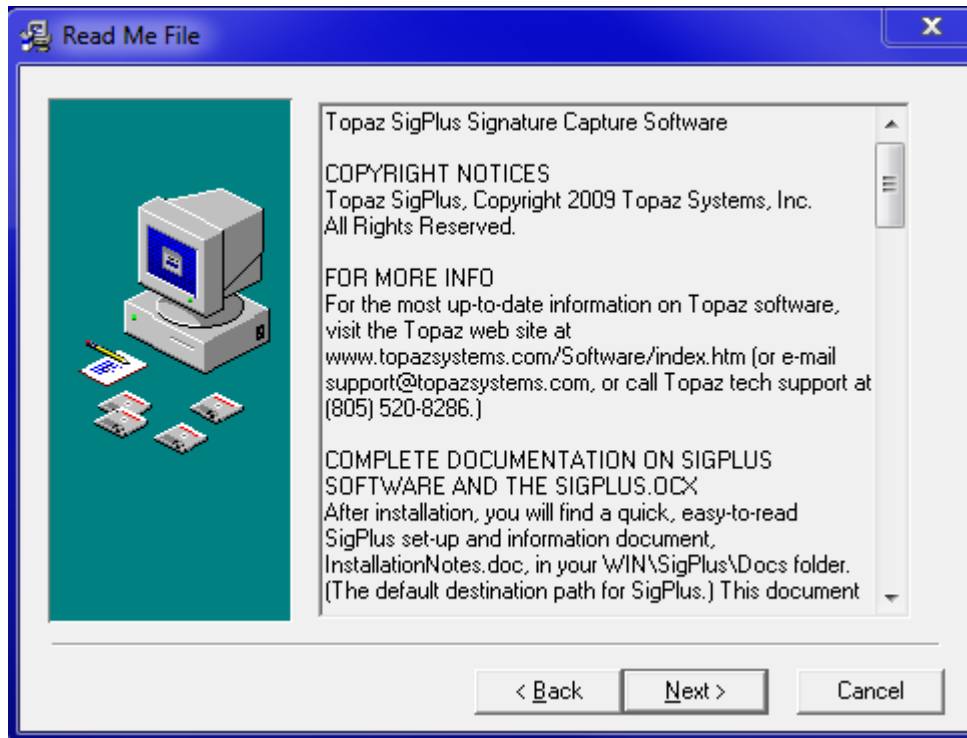
- Install the latest version of SigPlus for SigSock to the server.
- Copy the SigPlus.ini file from the server to each user’s local Windows directories. (Check that TabletType=7 is set, and that the TabletPortPath parameter matches the clientname used in the call to the SigSock.exe)
- Copy the SigSock.exe to the client, ensuring that it is called with the proper parameters before running the SigPlus application on the client.

Specifically, do the following:

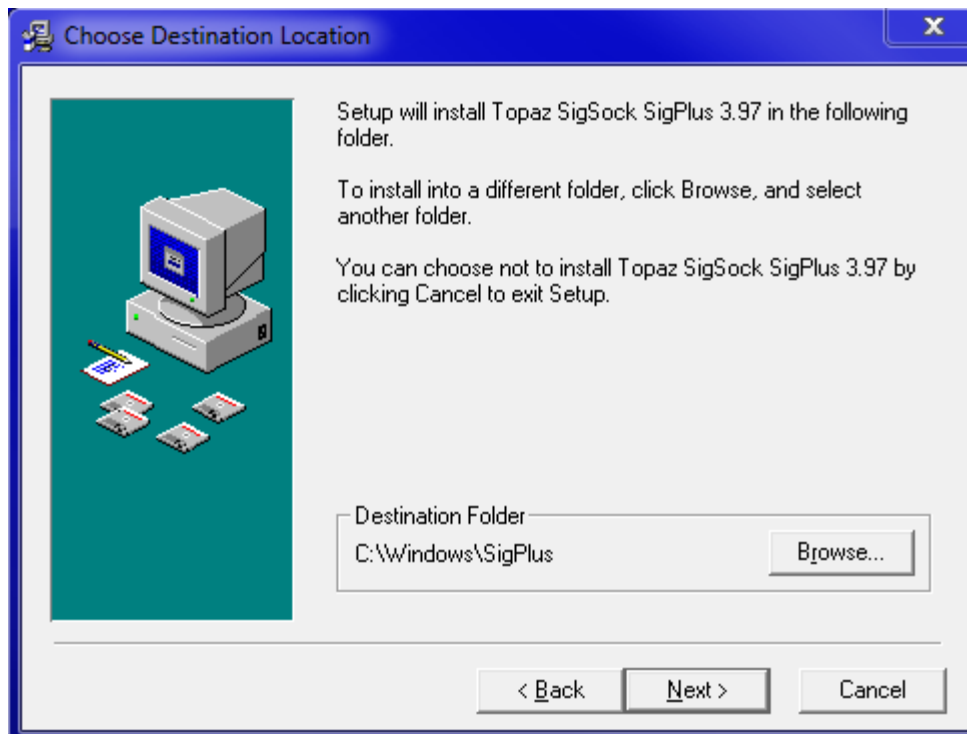
1. Open the folder in which **sigsockinstall.exe** is located. Usually this is D:\adl3\ in an MS SQL environment or D:\adl2\ in an Oracle environment, where D is the root drive where ADL applications are installed.
2. Start the installation program by double clicking sigsockinstall.exe.

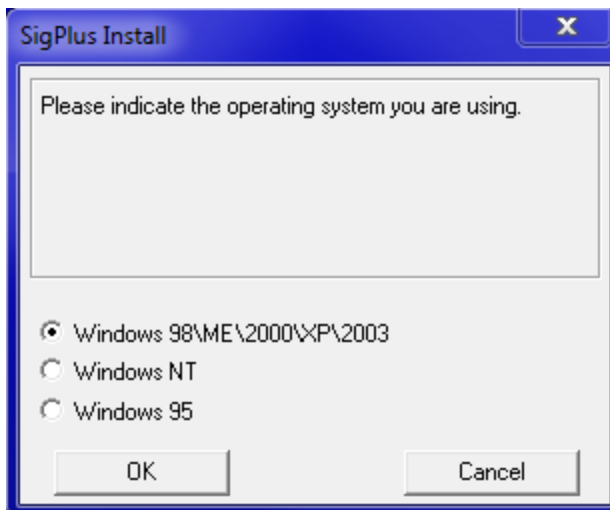


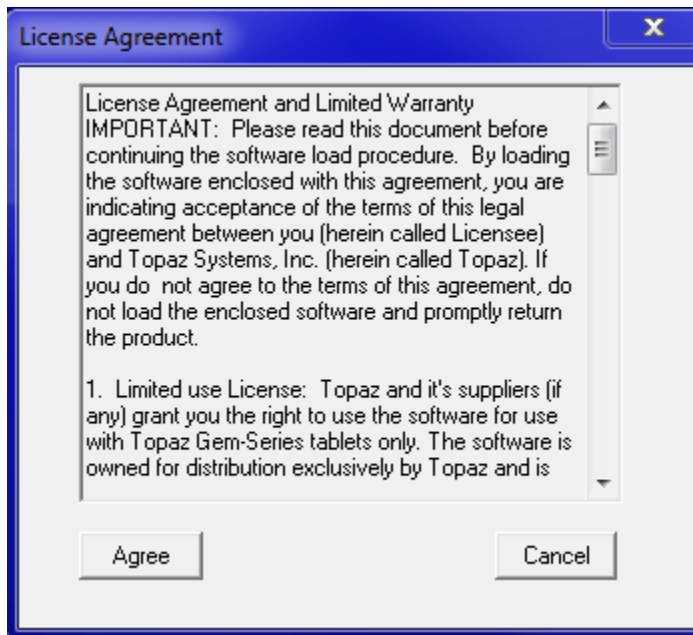
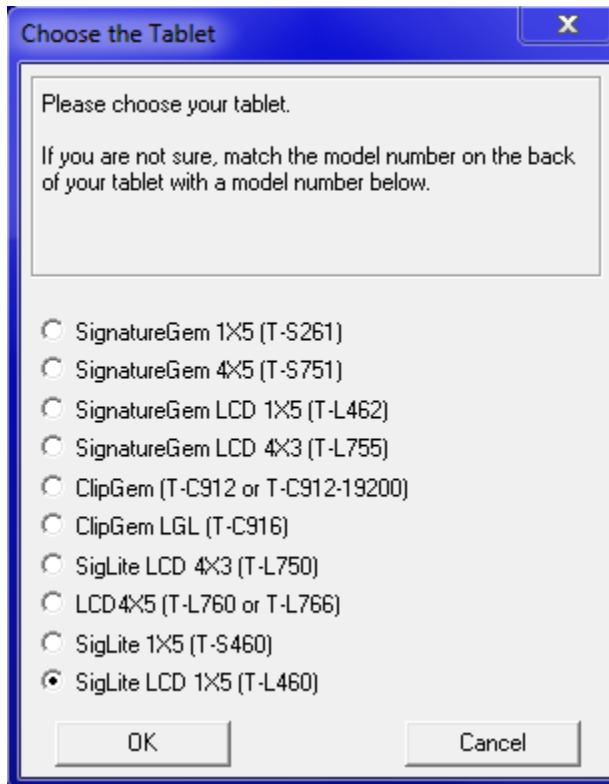
3. Close any open Windows programs and click the **Next** button.
4. Read the information displayed in the **Read Me File** window. Click the **Next** button when finished.

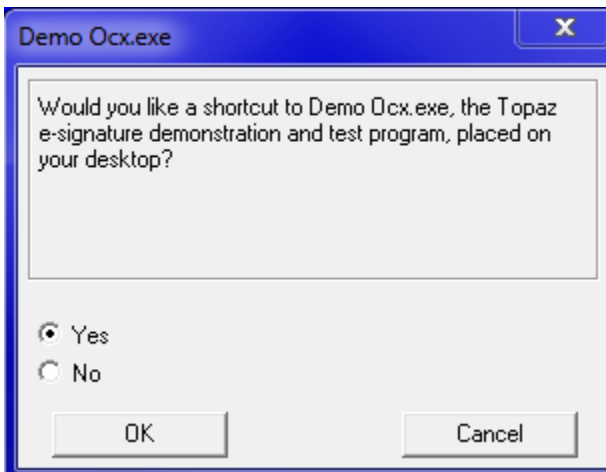
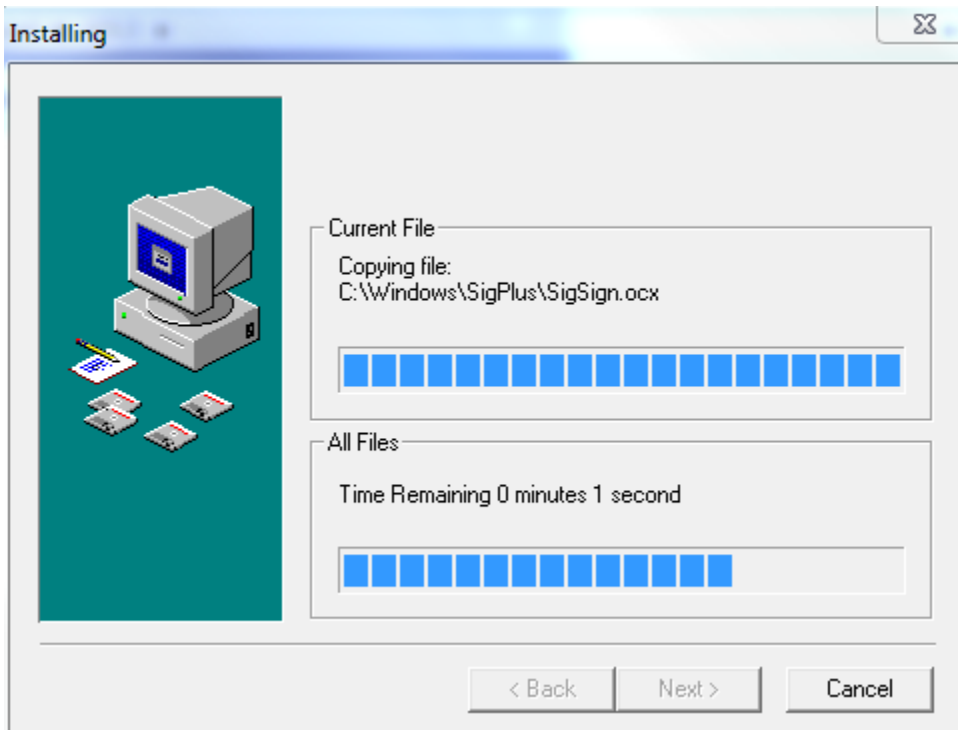


5. Use the **Browse** button in the **Choose Destination Location** window to specify a folder where the Topaz SigSock software will be installed. Click the **Next** button when finished.

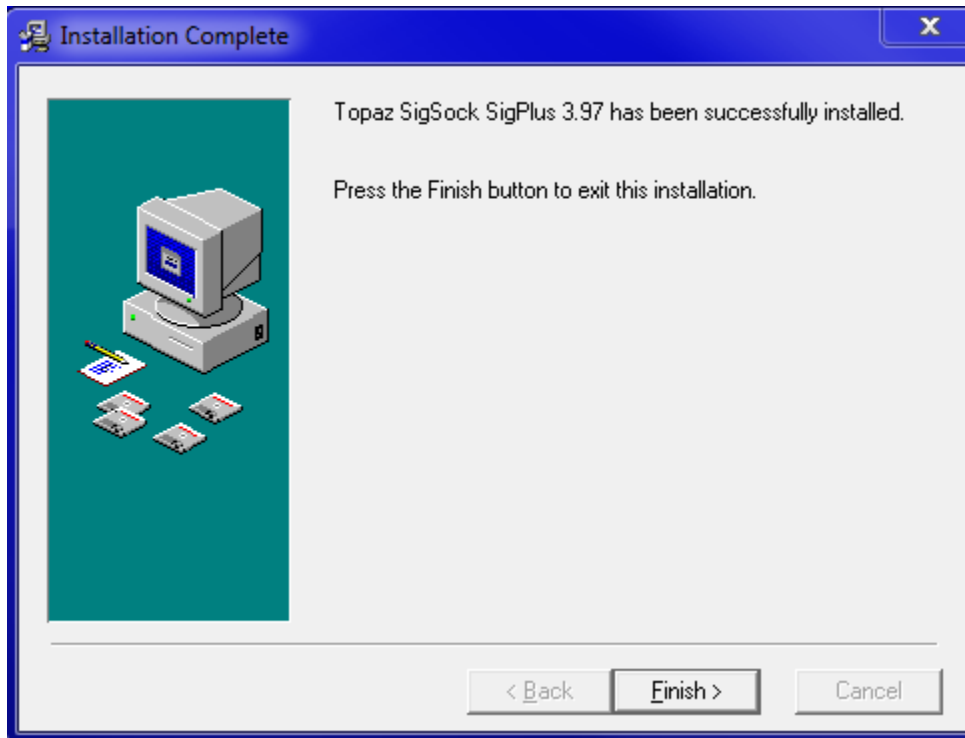












From sigsock.pdf

What files are installed by SigSock, and where are they located?

You must start by installing the SigSock system to the server from this location: <http://www.topazsystems.com/Software/sigsockinstall.exe>. This installs Topaz's standard SigPlus ActiveX SDK (version 3.89), along with a specialized SigPlus.ini file, and SigSock.exe client, which must run on the client machine. During install, please make sure to choose the signature pad model you will be using from the list. When finished, you will find the SigSock.exe file in the WIN\SigPlus\Tools\SigSock folder on the server. This SigSock.exe file must be copied over to each local client machine that is to use the Topaz HSB signature pad.

Next, copy the WIN\SigPlus.ini file to each signature pad user's profile Windows directory on the server. The location of the user profile Windows folder is as follows: Documents and Settings\%login_name%\Windows

Without this file in the appropriate location, the signature pad parameters will not be available to the user when they log in, and SigSock (nor the signature application) will work.

How do I use the SigSock.exe?

SigSock.exe must be run on the client machine before the signature pad can be utilized in a server-based signature application. Copy SigSock.exe to whatever location on the client you prefer; it does not matter, as long as you can run SigSock.exe with command line parameters.

SigSock must be called and provided with several command line arguments in order to function properly, named and defined as follows:

hostname

clientname

tabletype

hostname:

The FQDN (fully-qualified domain name) of the server, as in *myhost.example.com*

clientname:

This name can be set as you prefer. It must, however, match the TabletPortPath parameter in the SigPlus.ini file (see "How is the SigPlus.ini file to be configured" below). By default, the sigsockinstall.exe sets this value as:

TabletPortPath=test

So, you may pass "test" as the clientname, but ultimately you will want to change this value in the user's specific INI file, and be sure to pass it here as the second argument in your call tabletype:

Always pass a value of 6 in the argument (as 6 is used to specify the Topaz “HSB” pad)

An example call to run SigSock.exe might be something like this:

SigSock.exe myhost.example.com test 6

Be sure to call and run SigSock.exe with the proper parameters before attempting to run and use the signature application on the server.

How is the SigPlus.ini file to be configured?

Once sigsockinstall.exe has been installed to the server, you can find the appropriate SigPlus.ini file in the server’s WIN directory. As mentioned previously, the SigPlus.ini file must be copied to each user’s local Windows folder, in the following location:
Documents and Settings\%login_name%\Windows

There are two parameters that you need to make sure are set in order to use SigSock.exe

TabletType

TabletPortPath

Simply make sure that the TabletType=7. The value of 7 tells SigPlus to expect data to come in from the SigSock.exe running on the client computer.

TabletPortPath can be set to whatever value you prefer; however, you must make sure that whatever is set in TabletPortPath is also used as the second argument (clientname) in the call when running the SigSock.exe (see “How do I use the SigSock.exe” section above). The clientname parameter and the TabletPortPath values must match.

By default, SigPlus.ini is installed with the TabletPortPath=test

All other values should be set up for the particular signature pad model used in the capture process (such as TabletModel, etc.). In general, you should not need to change any parameter in the SigPlus.ini file except for the TabletPortPath parameter.

When testing using the demoexe the firewall blocked access, choose to allow access

